

Angle Flange 3261

Size In.	ID In.	OD In.	Length In.	Thickness In.	Number of holes	Hole Dia. In.	Bolt Circle In.	Weight Lbs
3	3.0625	4.9375	0.9375	.125	6	.28125	4.3125	.70
4	4.0625	6.0625	0.9375	.125	6	.28125	5.3125	.85
5	5.0625	7.0625	1.0625	.125	6	.28125	6.3125	1.18
6	6.0938	8.0938	1.0	.125	6	.28125	7.3125	1.38
7	7.125	9.375	1.0	.125	6	.375	8.5	1.73
8	8.125	10.375	1.125	.125	6	.375	9.5625	1.90
9	9.125	11.625	1.25	.125	6	.4375	10.625	2.55
10	10.125	12.875	1.25	.125	6	.4375	11.8125	3.05
11	11.125	14.125	1.25	.125	6	.4375	12.75	3.25
12	12.125	15.125	1.5	.125	8	.4375	14	3.88
13	13.125	16.125	1.5	.125	8	.4375	15	4.25
14	14.125	17.125	1.5	.125	8	.4375	16	4.75
15	15.125	18.125	1.5	.1875	8	.4375	17	7.25
16	16.125	19.125	1.5	.1875	8	.4375	18	8.00
17	17.125	20.125	1.5	.1875	8	.4375	19	8.25
18	18.125	21.125	1.5	.1875	8	.4375	20	8.50
19	19.125	22.125	1.5	.1875	12	.4375	20.75	8.75
20	20.125	23.125	1.5	.1875	12	.4375	21.75	9.50
21	21.125	24.125	1.5	.1875	12	.4375	22.75	10.25
22	22.125	25.125	1.5	.1875	12	.4375	23.75	10.75
23	23.125	26.125	1.5	.1875	12	.4375	24.875	11.25
24	24.125	27.125	1.5	.1875	12	.4375	25.875	11.50
25	25.125	28.125	1.5	.1875	16	.4375	26.875	12.00
26	26.125	30.125	2.0	.1875	16	.4375	28.375	16.75
27	27.125	31.125	2.0	.1875	16	.4375	29.375	17.38
28	28.125	32.125	2.0	.1875	16	.4375	30.375	18.00
29	29.125	33.125	2.0	.1875	16	.4375	31.375	18.75
30	30.125	34.125	2.0	.1875	16	.4375	32.375	19.50
31	31.125	35.125	2.0	.1875	16	.4375	33.375	20.38
32	32.125	36.125	2.0	.1875	16	.4375	34.375	20.75
33	33.125	37.125	2.0	.1875	16	.4375	35.375	21.25
34	34.125	38.125	2.0	.1875	16	.4375	36.375	22.00
35	35.125	39.125	2.0	.1875	16	.4375	37.375	22.50
36	36.125	40.125	2.0	.1875	16	.4375	38.375	23.00
37	37.125	41.125	2.0	.1875	24	.4375	39.375	23.75
38	38.125	42.125	2.0	.1875	24	.4375	40.375	24.50
39	39.125	43.125	2.0	.1875	24	.4375	41.375	25.00
40	40.125	44.125	2.0	.1875	24	.4375	42.375	25.75

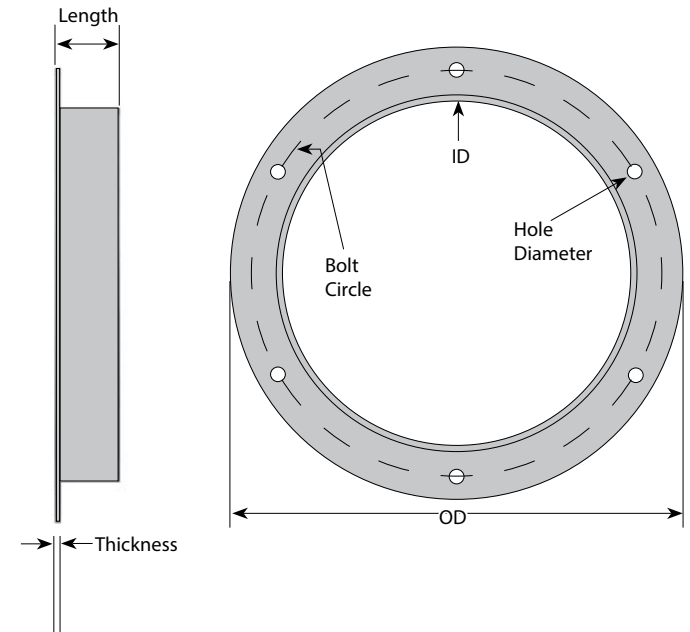
Notes:

- Angle flanges are only available with the shown hole patterns.
- For different hole patterns or no holes, Nordfab can use laser technology to burn flat flanges to match your needs.

Hardware:

Hardware is not supplied with flanges and must be supplied by customer:

- 7/16" holes – use 3/8-16 x 1-1/2" lockwasher, and hex nut - Grade 5 or better
- 3/8" holes – use 5/16-18 x 1-1/2" lockwasher, and hex nut - Grade 5 or better
- 9/32" holes – use 1/4-20 x 1-1/2" lockwasher, and hex nut - Grade 5 or better



Angle Flange 3261

Temperature Rating of Product Components		
° F	Angle Flange	
-60°	Galvanized Steel	Optional - 304SS
-40°		
0°		
194°		
250°		
400°		
500°		
1100°		

Additional Notes
Galvanized steel provides little or no breakdown of zinc (zinc melting point 740°F)
304SS: <ul style="list-style-type: none"> bluing may occur at 800° F and above

Compliance / Rating of Product Components		
Product	Material	Compliance / Rating
QF Angle Flange	Galvanized	ASTM A527 with a G-90 rating
	304SS	Finish meets ASTM A240
	316SS	Finish meets ASTM A240