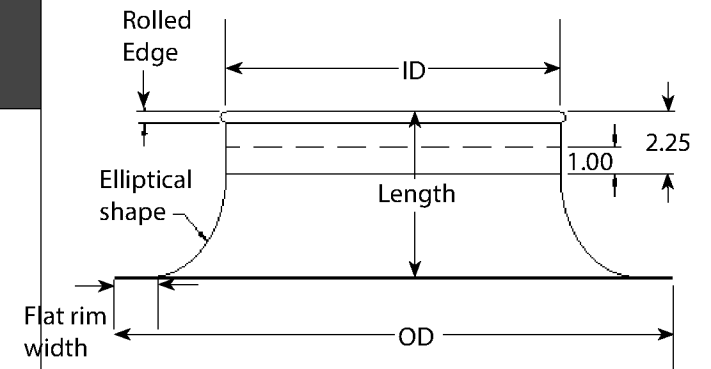


# QF Bell Mouth Hood 3251

| Size<br>In. | Collar<br>ID<br>In. | Collar<br>Rolled<br>Edge<br>(nom. in) | Bell<br>OD<br>In. | Height<br>In. | Flat<br>rim<br>In. | Std<br>Weight<br>Lbs | Galvanized Steel<br>(collar only, bell 18ga) |      |      | 304SS<br>(or 316SS)<br>collar only |          |
|-------------|---------------------|---------------------------------------|-------------------|---------------|--------------------|----------------------|--|------|------|------------------------------------|----------|
|             |                     |                                       |                   |               |                    |                      | 22ga   | 20ga | 18ga | 22ga                               | 20ga     |
| 3           | 2.90                | 0.2                                   | 8.0               | 4.5*          | 1.00*              | .90                  | Std  |      |      | Std                                | Optional |
| 4           | 3.86                | 0.2                                   | 9.0               | 4.5*          | 1.00*              | 1.05                 |  |      |      |                                    |          |
| 5           | 4.86                | 0.2                                   | 10.0              | 4.5*          | 1.00*              | 1.15                 |  |      |      |                                    |          |
| 6           | 5.89                | 0.2                                   | 12.0              | 5.0*          | 1.25*              | 1.85                 |  |      |      |                                    |          |
| 7           | 6.89                | 0.3                                   | 13.0              | 5.0*          | 1.25*              | 1.95                 |  |      |      |                                    |          |
| 8           | 7.88                | 0.3                                   | 14.0              | 5.0*          | 1.25*              | 2.10                 |  |      |      |                                    |          |
| 9           | 8.88                | 0.3                                   | 15.0              | 5.0*          | 1.25*              | 2.25                 |  |      |      |                                    |          |
| 10          | 9.89                | 0.3                                   | 16.0              | 6.0*          | 1.25*              | 3.00                 |  |      |      |                                    |          |
| 11          | 10.88               | 0.3                                   | 19.0              | 6.0*          | 1.25*              | 3.70                 |  |      |      |                                    |          |
| 12          | 11.97               | 0.4                                   | 20.0              | 6.0*          | 1.25*              | 4.10                 |  |      |      |                                    |          |
| 13          | 12.97               | 0.4                                   | 21.0              | 6.0*          | 1.25*              | 4.50                 | Optional                                     |      |      |                                    |          |
| 14          | 13.96               | 0.4                                   | 22.0              | 6.0*          | 1.25*              | 5.75                 |  |      |      |                                    |          |
| 15          | 14.97               | 0.4                                   | 23.0              | 6.0*          | 1.5*               | 6.25                 |  |      |      |                                    |          |
| 16          | 15.97               | 0.4                                   | 26.0              | 7.0*          | 1.5*               | 7.50                 |  |      |      |                                    |          |
| 17          | 16.97               | 0.4                                   | 27.0              | 7.0*          | 1.5*               | 8.25                 |  |      |      |                                    |          |
| 18          | 17.96               | 0.4                                   | 28.0              | 7.0*          | 1.5*               | 9.50                 |  |      |      |                                    |          |
| 19          | 18.96               | 0.4                                   | 29.0              | 7.0*          | 1.5*               | 10.10                |  |      |      |                                    |          |
| 20          | 19.96               | 0.4                                   | 30.0              | 7.0*          | 1.5*               | 10.75                |  |      |      |                                    |          |
| 21          | 20.97               | 0.4                                   | 31.0              | 8.0*          | 1.75*              | 11.50                |  |      |      |                                    |          |
| 22          | 21.97               | 0.4                                   | 34.0              | 8.0*          | 1.75*              | 12.25                |  |      |      |                                    |          |
| 23          | 22.97               | 0.4                                   | 35.0              | 8.0*          | 1.75*              | 12.90                |  |      |      |                                    |          |
| 24          | 23.94               | 0.4                                   | 36.0              | 8.0*          | 1.75*              | 14.50                |  |      |      |                                    |          |



Please note: Dimensions may vary due to spun bell material

# QF Bell Mouth Hood 3251

| Temperature Rating of Product Components |                    |                  |                                   |  |   |
|--|--------------------|------------------|-----------------------------------|--|---|
| ° F                                      | QF Bell Mouth Hood |                  | Sealants                          |  |   |
| 1100°                                    | Galvanized Steel   | Optional - 304SS | 3M Scotch Seal Metal Sealant 2084 | Optional - Rock River Silicone Sealant | Optional - Red Devil HVAC/R High Temperature Silicone Sealant |
| 500°                                     |                    |                  |                                   |  |   |
| 400°                                     |                    |                  |                                   |  |   |
| 390°                                     |                    |                  |                                   |  |   |
| 250°                                     |                    |                  |                                   |  |   |
| 194°                                     |                    |                  |                                   |  |   |
| 0°                                       |                    |                  |                                   |  |   |
| -40°                                     |                    |                  |                                   |  |   |
| -60°                                     |                    |                  |                                   |  |   |

| Additional Notes   |
|--|
| At temperatures ranging between 390° F and 480° F, the zinc-iron alloy layers in galvanized steel will continue to provide a high level of protection from corrosion. However, there may be some peeling, changes in mechanical properties, and reduction in the corrosion protection. Recommended max. service temperature is 390° F. |
| Rock River Silicone Sealant and Red Devil HVAC/R High Temperature Silicone Sealant are not paintable   |
| 304SS: <ul style="list-style-type: none"> <li>• 3" - caulking on collared seam only</li> <li>• bluing may occur at 800° F and above</li> </ul>   |

| Compliance / Rating of Product Components |               |   |
|---|---------------|---|
| Product                                   | Material      | Compliance / Rating   |
| QF Bell Mouth Hood                        | Galvanized    | ASTM A527 with a G-90 rating  |
|   | 304SS         | Finish meets ASTM A240  |
|   | 316SS         | Finish meets ASTM A240  |
| 3M Scotch Seal Metal Sealant 2084         | Acetone blend | AAMA Specification 801.1  |
| Rock River Sealant                        | 100% Silicone | ASTM C920 Class 25, TT-S-00230C Class A and TT-S-001543A, FDA No 421 CFR 117.2600, conforms to FDA requirements                             |
| Red Devil HVAC/R High Temperature Sealant | Silicone      | ASTM C920 Class 25, TT-S-00230C Class A and TT-S-001543A, CEBTP 432.6 140-2, Mil Spec 46106A, CGSB 19C9-9B, DIN 18540 Part 2, OREX 150031-2 |

**Construction:**

**Bell:** constructed from a solid sheet so no seams are present in the bell portion. The bell begins as 18 gauge and thickness cannot be changed.

**Collars:** have a laser welded longitudinal seam (exception: 3" collars are lapped, spot welded, and caulked.) Collars are attached to the body using a raised hemmed, spot welded seamed construction and are caulked.

**Ends:** Standard QF end can be changed to Raw ID (RAWID), Raw OD (RAWOD), No Fitting (NF), Hose Adapter (RAWFLEX), Flat Flange (FFL), Angle Flange (ANGFL), or Van Stone (VANSTONE).