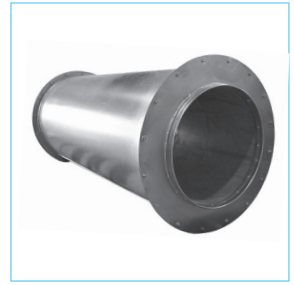


Silencer

Ordering Information

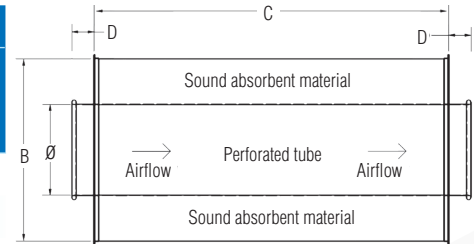
- When ordering, specify material, gauge (if non-standard), dimension and end style.
- Reduces sound levels from fans and equipment. Due to varying applications, no decibel testing has been performed on this product.
- Air flow directional arrow sticker is attached to product.



Ø in.	B OD in.	C Body Length in.	D (QF) in.	D (AFL/FFL) in.	Std Weight Lbs	
3	11	24	3.5 (for each end)		10	
4	12	24			21	
5	13	24			35	
6	14	26			43	
7	15	26			54	
8	16	31			65	
9	17	36			76	
10	18	44			89	
11	19	50			96	
12	20	50			104	
13	21	54			113	
14	22	54			122	
15	23	60			2 (for each end)	149
16	24				176	
17	25				201	
18	26		225			
19	27		245			
20	28		265			
21	29		288			
22	30		310			
23	31		358			
24	32		406			
26	34	546	4 (for each end)			
28	36	600				
30	38	678				
32	40	700				
34	42	770				
36	44	897				
38	46	974				
40	48	1118				

QF Material Options

Galv				SS			
Gauges	Size (in)		Gauges	Size (in)			
	Min. Ø	Max. Ø		Min. Ø	Max. Ø		
Standard	20	3	16	20	3	16	
	16	17	40	16	17	40	



Flanged Material Options

Galv				SS			
Gauges	Size (in)		Gauges	Size (in)			
	Min. Ø	Max. Ø		Min. Ø	Max. Ø		
Standard	20	3	16	20	3	16	
	16	17	40	16	17	40	

Construction

Collars: Caulked and painted.
Outer Tube: On 16" diameter pipe and all smaller sizes, longitudinal seam is laser welded. On 17" and greater, seam is plasma welded.
Optional End Styles: Standard QF end can be changed to Raw ID (RI), Raw OD (RO), No Fitting (NF), Hose Adapter (RF), Flat Flange (FFL), Angle Flange (AFL), or Van Stone (VS).

Suction Nozzle Assembly

Ordering Information

- Affix to end of hose for suction cleaning.
- 4" hose connection. Length = 21.



Ø in.	Std Weight Lbs
4	5.60

QF Material Options

Galv		SS	
Gauge	Size (in)	Gauge	Size (in)
Standard	22	4	Standard
	4	22	

Construction

Assembly consists of QF Reducer, Quick-Fit Sleeve, and QF Clamp.
Handle: 1018 carbon steel, painted

