



# PROPOSAL

AIR CLEANING SPECIALISTS, INC.  
 826 HORAN DRIVE  
 FENTON, MO 63026  
 Phone: (636) 349-4400 Fax: (636) 349-0556  
<http://www.aircleaningspecialists.com>

Order Number: 0084187  
 Order Date: 9/29/2017  
 Salesperson: Cody Bingaman  
 Customer Number: COFFEE

<b>Sold To:</b> COFFEE ROASTER N/A Fenton, MO 63026  (636) 349-4400	<b>Ship To:</b> COFFEE ROASTER AMBEX 10KG GALV Fenton, MO 63026
--	--

QTY	PART NUMBER	DESCRIPTION	PRICE	AMOUNT
		AMBEX COFFEE ROASTER 10KG, NORDFAB DUCTING, GALVANIZED, ROOF EXHAUST, CAD DWG 17-092922D		
1.00	3249-0600-10000	06" MACHINE ADAPTER, GALVANIZED STEEL 6" ID RAW, LENGTH = 6.5"	27.90	27.90
1.00	3249-0600-10000	06" MACHINE ADAPTER, GALVANIZED STEEL 6" ID RAW, LENGTH = 14.5"	27.90	27.90
1.00	3214-0690-10900	06" 90DEG. TUBED ELBOW 1.5CLR, GALVANIZED STEEL 1.5 CLR / 14 GAUGE	160.10	160.10
1.00	3214-0645-10900	06" 45DEG. TUBED ELBOW 1.5CLR, GALVANIZED STEEL 1.5 CLR / 14 GAUGE	160.10	160.10
4.00	3260-0600-10004	06" CLAMP W/ PIN, GALVANIZED STEEL SILICONE SEALS	13.40	53.60
1.00	3220-08XX-10000	08" STANDARD BRANCH, GALVANIZED STEEL A=8" QF, B=6" QF, C=6" QF, 45 DEGREES ***SEE DRAWING****	130.20	130.20
3.00	3200-0800-10000	08" x 59.06" LONG PIPE, GALVANIZED STEEL 22 GAUGE	51.70	155.10
1.00	3202-0800-10000	08" ADJ. NIPPLE, GALVANIZED STEEL 11" LENGTH	22.20	22.20
1.00	3262-0800-00005	08" O-RING HIGH TEMP. - RED SILICONE	7.80	7.80
1.00	3204-0800-10000	08" RAIN CAP, GALVANIZED STEEL	130.00	130.00
5.00	3260-0800-10004	08" CLAMP W/ PIN, GALVANIZED STEEL SILICONE SEALS	14.50	72.50

Continued



# PROPOSAL

AIR CLEANING SPECIALISTS, INC.  
 826 HORAN DRIVE  
 FENTON, MO 63026  
 Phone: (636) 349-4400 Fax: (636) 349-0556  
<http://www.aircleaningspecialists.com>

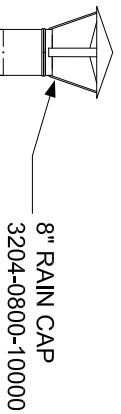
Order Number: 0084187  
 Order Date: 9/29/2017  
 Salesperson: Cody Bingaman  
 Customer Number: COFFEE

<b>Sold To:</b> COFFEE ROASTER N/A Fenton, MO 63026  (636) 349-4400	<b>Ship To:</b> COFFEE ROASTER AMBEX 10KG GALV Fenton, MO 63026
--	--

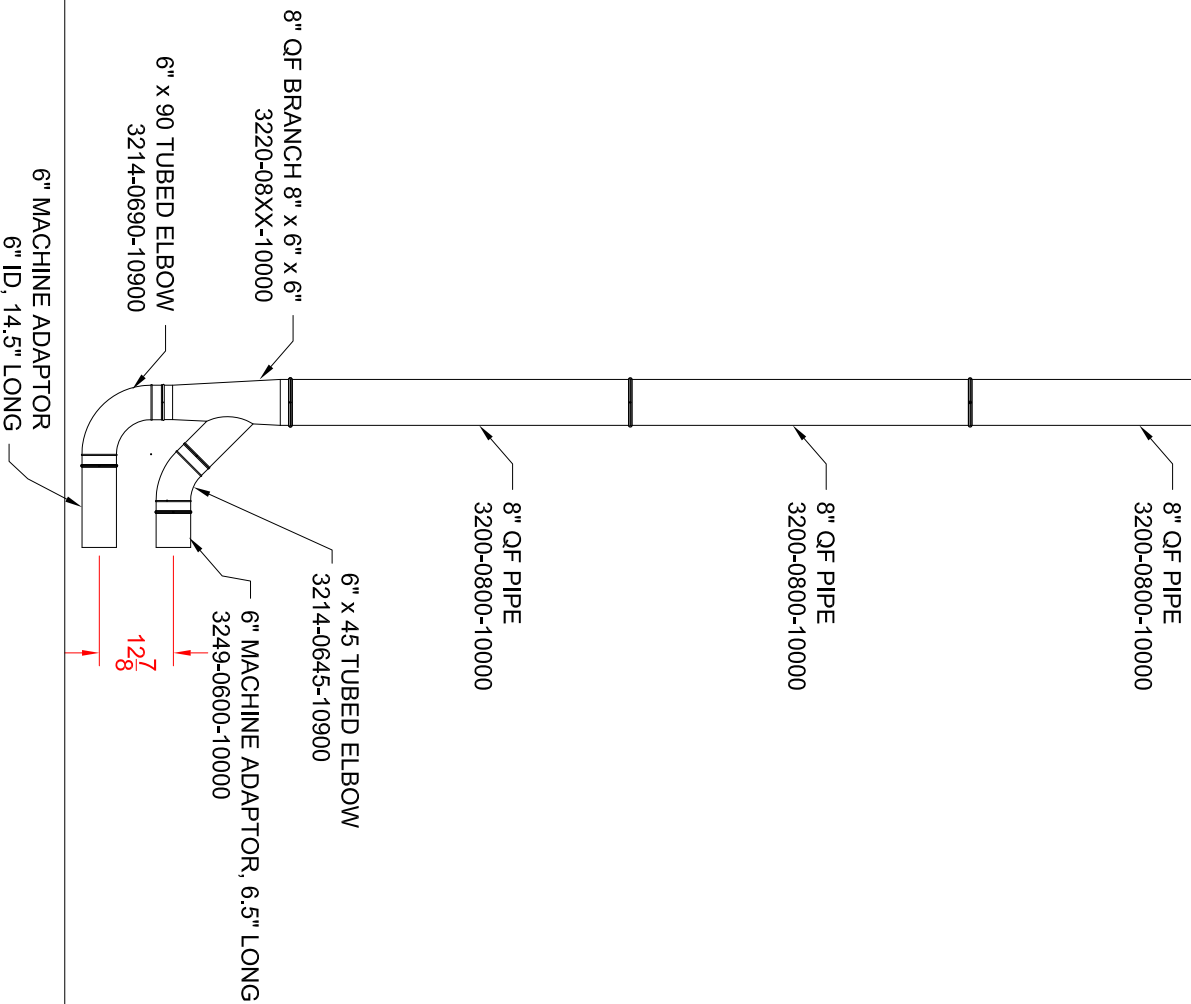
QTY	PART NUMBER	DESCRIPTION	PRICE	AMOUNT
		***PLEASE ALLOW 5 WORKING DAYS PLUS SHIPPING TRANSIT***  ***FREIGHT CHARGES TO BE INVOICED SEPARATELY***		

<b><u>Packing Instructions:</u></b>	<b><u>Shipping Instructions:</u></b>
-------------------------------------	--------------------------------------

CUSTOMER P.O.: QUOTE		NET ORDER:	947.40
SHIP DATE:		SALES TAX:	0.00
SHIP VIA: BEST WAY		<b>ORDER TOTAL:</b>	<b>947.40</b>
TERMS: CREDIT CARD	CONFIRM TO: Info		
F.O.B.: THOMASVILLE, NC	EMAIL: <a href="mailto:info@ductingsystems.com">info@ductingsystems.com</a>		



CEILING



Air Cleaning Specialists  
 826 Horan Drive  
 Fenton, MO 63026  
 866-455-2130 - Phone  
 636-349-0556 - Fax  
[www.ductingsystems.com](http://www.ductingsystems.com)  
[info@ductingsystems.com](mailto:info@ductingsystems.com)

DWG NUMBER

17-092922

QUOTE NUMBER

84187

REVISION

0

JOB NAME

AMBEX ROASTER  
 10KG

DRAWING FOR:

AMBEX 10 KG  
 ROASTER  
 17-092922D



VIEW NAME  
 SIDE VIEW

DRAWN: CODY BINGAMAN

CHECKED: RYAN GRAYEM

MATERIAL  
 GALVANIZED

DWG DATE GAUGE  
 9/29/17 TUBED

WELD TYPE FINISH  
 TUBED STD MILL

PAPER SIZE SHEET  
 8.5" X 11" 1 OF 1

SCALE: CUSTOM