



Slotted Fume Hoods
Series SFH

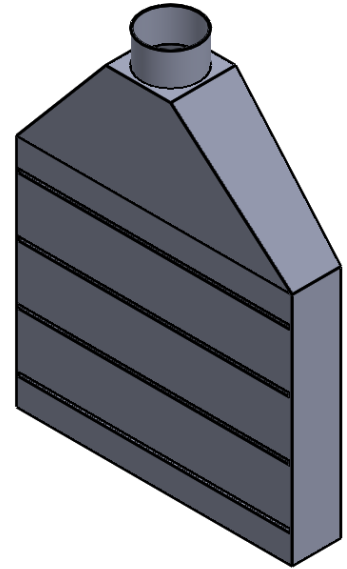
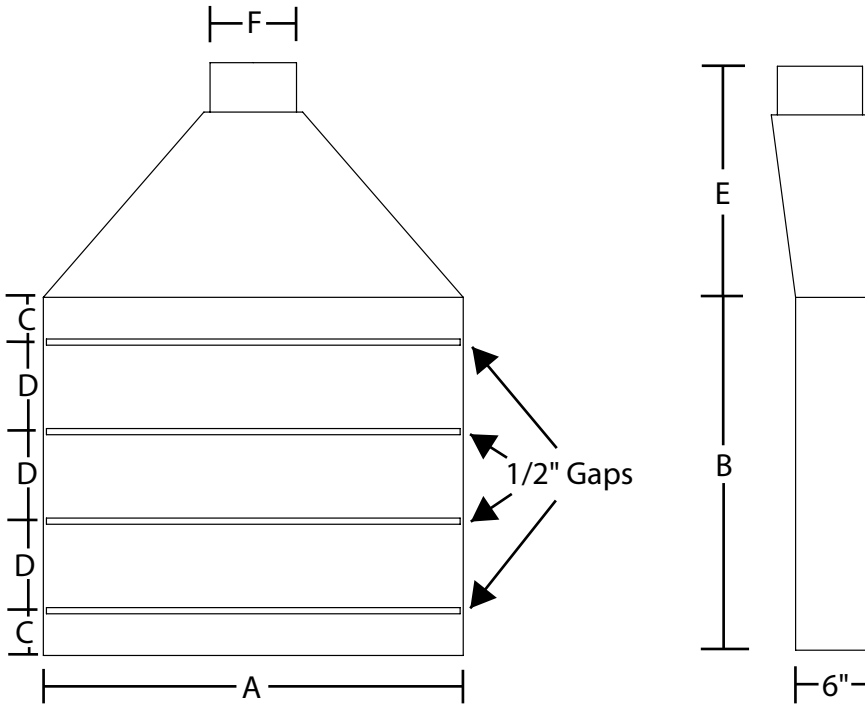
**TECHNICAL
INFORMATION**

PROJECT: _____
 LOCATION: _____
 ARCHITECT: _____
 ENGINEER: _____
 SALES ENGINEER: _____
 DATE: _____

www.ductingsystems.com info@ductingsystems.com 866-455-2130

Page: WSC-28

**Slotted Fume Hoods
Series -SFH**



| Model | A | B | C | D | E | F | CFM Guidelines | P.D. | Weight |
|--------|-----|-----|--------|--------|-----|----|----------------|------|----------|
| SFH-34 | 34" | 29" | 3 3/8" | 6 3/4" | 15" | 7" | 1050 | .67" | 114 lbs. |
| SFH-46 | 46" | 35" | 4 1/8" | 8 1/4" | 21" | 8" | 1400 | .70" | 142 lbs. |
| SFH-58 | 58" | 58" | 4 1/2" | 9" | 27" | 8" | 1750 | .82" | 150 lbs. |

Notes:

Slotted Hood Depth - 6" for all models - Construction is 18-gauge Welded Paint Grip
 Slotted Hood Performance is based on 23rd Edition - Industrial Ventilation Guidelines
 Pressure drop calculations based on recommended CFM
 Pressure drop will vary if alternate CFM is used

Custom side skirts and/or adjustable slots available, please consult factory