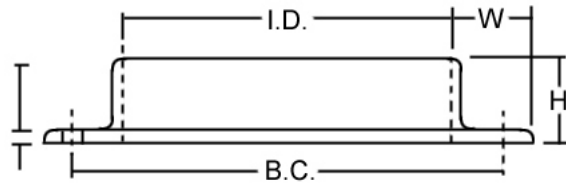
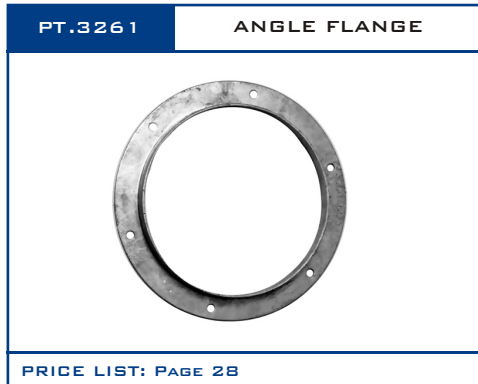


ROCK-SOLID DURABILITY  
WITH THE PERFECT SIZE  
AND CONFIGURATION FOR  
EVERY APPLICATION



AVAILABLE IN GALVANIZED STEEL (STANDARD)  
OR STAINLESS STEEL (OPTIONAL).



Galvanized and stainless steel metal Angle  
Ring Flanges.

DIA. (D) INCHES	PART NO.	I.D.	H	W	T	B.C.	NO. OF BOLTS	DIA. OF BOLT HOLES
3	3261-03	3 1/16"	7/8"	1"	11 GA	4 5/16"	6	9/32"
4	3261-04	4 1/16"	15/16"	1"	11 GA	5 5/16"	6	9/32"
5	3261-05	5 1/16"	1"	1"	11 GA	6 5/16"	6	9/32"
6	3261-06	6 3/32"	1"	1"	11 GA	7 5/16"	6	9/32"
7	3261-07	7 1/8"	1"	1 1/8"	11 GA	8 1/2"	6	3/8"
8	3261-08	8 1/8"	1 1/8"	1 1/8"	11 GA	9 9/16"	6	3/8"
9	3261-09	9 1/8"	1 1/4"	1 1/4"	11 GA	10 5/8"	6	7/16"
10	3261-10	10 1/8"	1 1/4"	1 3/8"	11 GA	11 13/16"	6	7/16"
11	3261-11	11 1/8"	1 1/4"	1 1/2"	11 GA	12 3/4"	6	7/16"
12	3261-12	12 1/8"	1 1/2"	1 1/2"	11 GA	14 -"	8	7/16"
13	3261-13	13 1/8"	1 1/2"	1 1/2"	11 GA	15 -"	8	7/16"
14	3261-14	14 1/8"	1 1/2"	1 1/2"	11 GA	16 -"	8	7/16"
15	3261-15	15 1/8"	1 1/2"	1 1/2"	3/16"	17 -"	8	7/16"
16	3261-16	16 1/8"	1 1/2"	1 1/2"	3/16"	18 -"	8	7/16"
17	3261-17	17 1/8"	1 1/2"	1 1/2"	3/16"	19 -"	8	7/16"
18	3261-18	18 1/8"	1 1/2"	1 1/2"	3/16"	20 -"	8	7/16"
19	3261-19	19 1/8"	1 1/2"	1 1/2"	3/16"	20 3/4"	12	7/16"
20	3261-20	20 1/8"	1 1/2"	1 1/2"	3/16"	21 3/4"	12	7/16"
21	3261-21	21 1/8"	1 1/2"	1 1/2"	3/16"	22 3/4"	12	7/16"
22	3261-22	22 1/8"	1 1/2"	1 1/2"	3/16"	23 3/4"	12	7/16"
23	3261-23	23 1/8"	1 1/2"	1 1/2"	3/16"	24 7/8"	12	7/16"
24	3261-24	24 1/8"	1 1/2"	1 1/2"	3/16"	25 7/8"	12	7/16"
25	3261-25	25 1/8"	1 1/2"	1 1/2"	3/16"	26 7/8"	16	7/16"
26	3261-26	26 1/8"	2"	2"	3/16"	28 3/8"	16	7/16"
27	3261-27	27 1/8"	2"	2"	3/16"	29 3/8"	16	7/16"
28	3261-28	28 1/8"	2"	2"	3/16"	30 3/8"	16	7/16"
29	3261-29	29 1/8"	2"	2"	3/16"	31 3/8"	16	7/16"
30	3261-30	30 1/8"	2"	2"	3/16"	32 3/8"	16	7/16"
31	3261-31	31 1/8"	2"	2"	3/16"	33 3/8"	16	7/16"
32	3261-32	32 1/8"	2"	2"	3/16"	34 3/8"	16	7/16"
33	3261-33	33 1/8"	2"	2"	3/16"	35 3/8"	16	7/16"
34	3261-34	34 1/8"	2"	2"	3/16"	36 3/8"	16	7/16"
35	3261-35	35 1/8"	2"	2"	3/16"	37 3/8"	16	7/16"
36	3261-36	36 1/8"	2"	2"	3/16"	38 3/8"	16	7/16"
37	3261-37	37 1/8"	2"	2"	3/16"	39 3/8"	24	7/16"
38	3261-38	38 1/8"	2"	2"	3/16"	40 3/8"	24	7/16"
39	3261-39	39 1/8"	2"	2"	3/16"	41 3/8"	24	7/16"
40	3261-40	40 1/8"	2"	2"	3/16"	42 3/8"	24	7/16"

**ORDERING**

**800-878-5030**

**NOTES:**

UNLESS SPECIFIED, 4" THROUGH 22" IS QF, OVER 22" IS FLANGED. DATA SUBJECT TO CHANGE WITHOUT NOTICE.  
STAINLESS STEEL COMPONENTS REQUIRING FLANGES WILL BE SUPPLIED WITH SS FLANGES UNLESS OTHERWISE SPECIFIED.  
STAINLESS STEEL COMPONENTS ARE MANUFACTURED WITH NO.304 SS. (PRICES FOR SS 316 = SS 304 X 1.25)  
ADDING A SS AFTER STANDARD PART NUMBERS SPECIFIES A SS PART.  
FOR SPECIAL PARTS OR ITEMS TO BE CUSTOM MANUFACTURED: CONTACT NORDFAB FOR QUOTATION.

