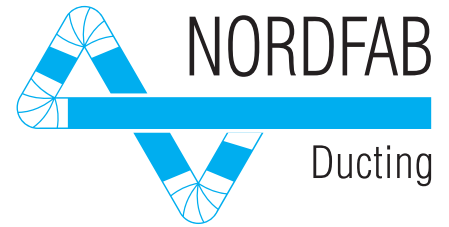
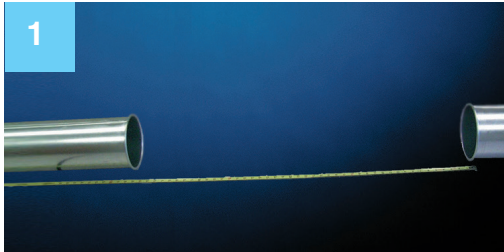


Nordfab Ducting

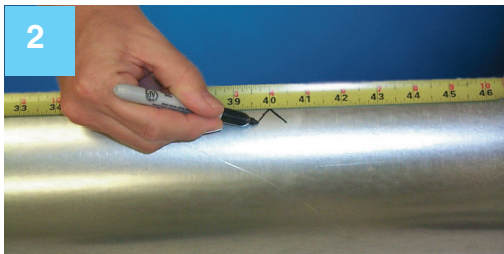
Instructions for Using the QF[®] Adjustable Nipple with QF O-ring in Dry System



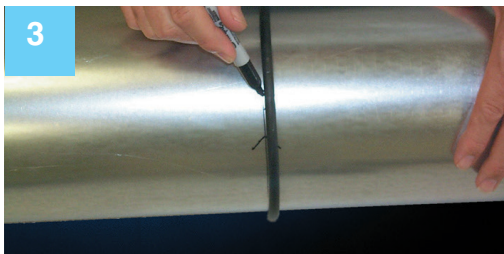
Each QF Duct Pipe is nominally 5 feet in length. To accommodate an existing span, a QF Adjustable Nipple is used with a shortened QF Pipe.



Measure distance to be spanned.



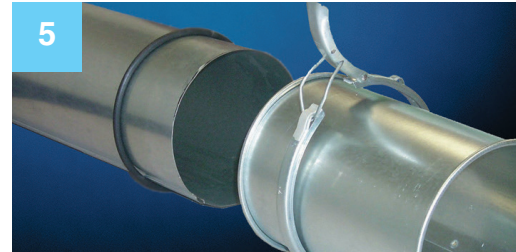
On QF Pipe, mark the distance to be spanned less 4".



Use provided QF O-ring to mark for cut.



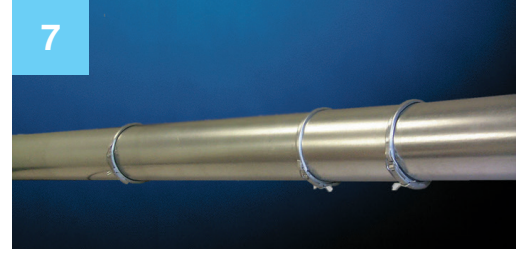
Drill access hole, then cut the QF Pipe.



Place QF O-ring on the cut piece of QF Pipe and slide the QF Adjustable Nipple over the QF Pipe.



Snap QF Clamp over the QF O-ring and end of QF Adjustable Nipple.



Finished connection with the QF Adjustable Nipple

Note: Keep cut QF Pipe in the same direction as the air flow.